

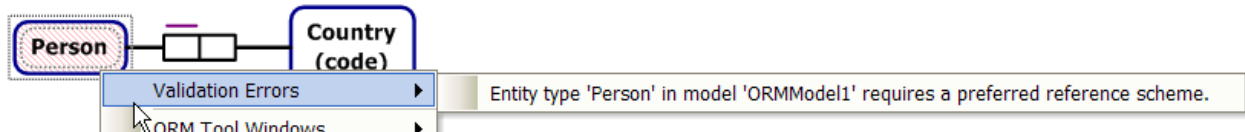
Controlling Error Message Display in NORMA

T. Halpin 2007 Sep 6

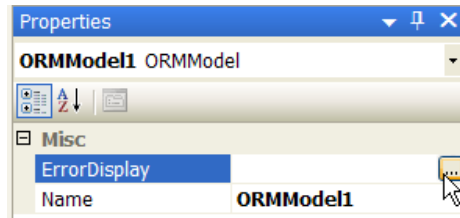
NORMA allows you to toggle on/off the display of various categories of error.

For example, suppose you want to turn off display of reference scheme errors.

By default, all errors are displayed, so in the following schema the absence of a reference scheme for Person is highlighted as shown.

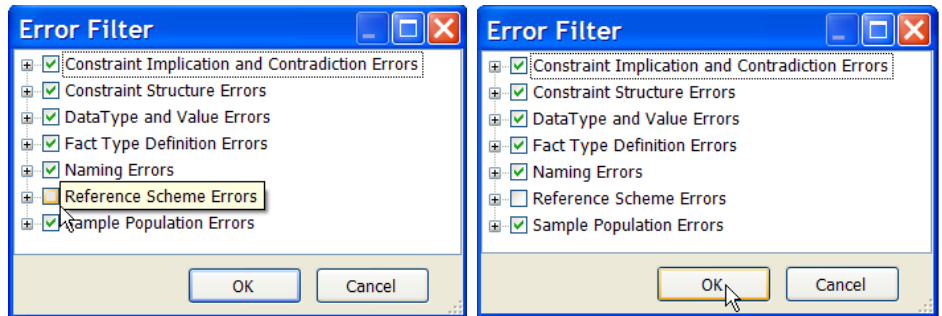


To turn off this error display, go to the Properties dialog and click the "..." button for ErrorDisplay.

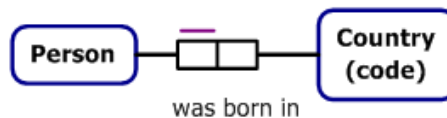


The Error Filter dialog appears.

To turn off display of all reference scheme errors, uncheck the check box for Reference Scheme Errors then press OK.



The error is no longer displayed.



You can gain finer control over error display by expanding the top level error categories in the dialog and unchecking just some of the subcategories.

