

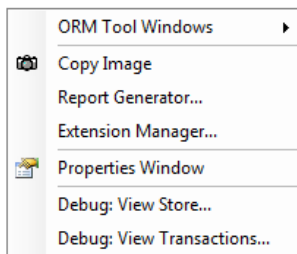
## Report Generator in NORMA

The report generator is used in NORMA for the designer to validate their ORM Schema. This document will outline how to generate a report from the diagram. NOTE: To use this feature, CTP 2007-03 or later must be installed.

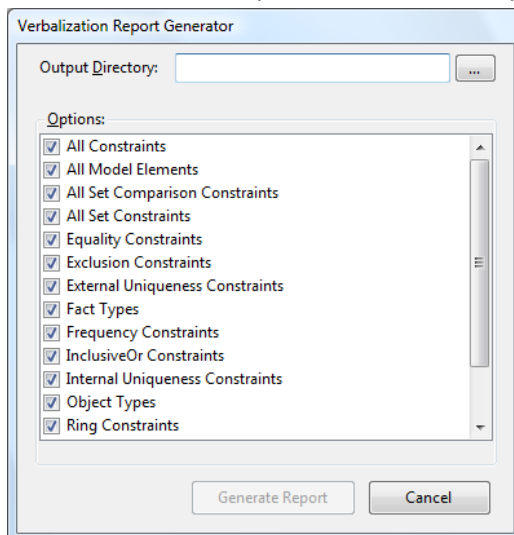
1. Create an ORM Diagram or Open an existing one.

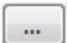
Note: This example uses the diagram from Lab 3, which is a two page diagram.

2. Right click on the Design Surface to open the context window



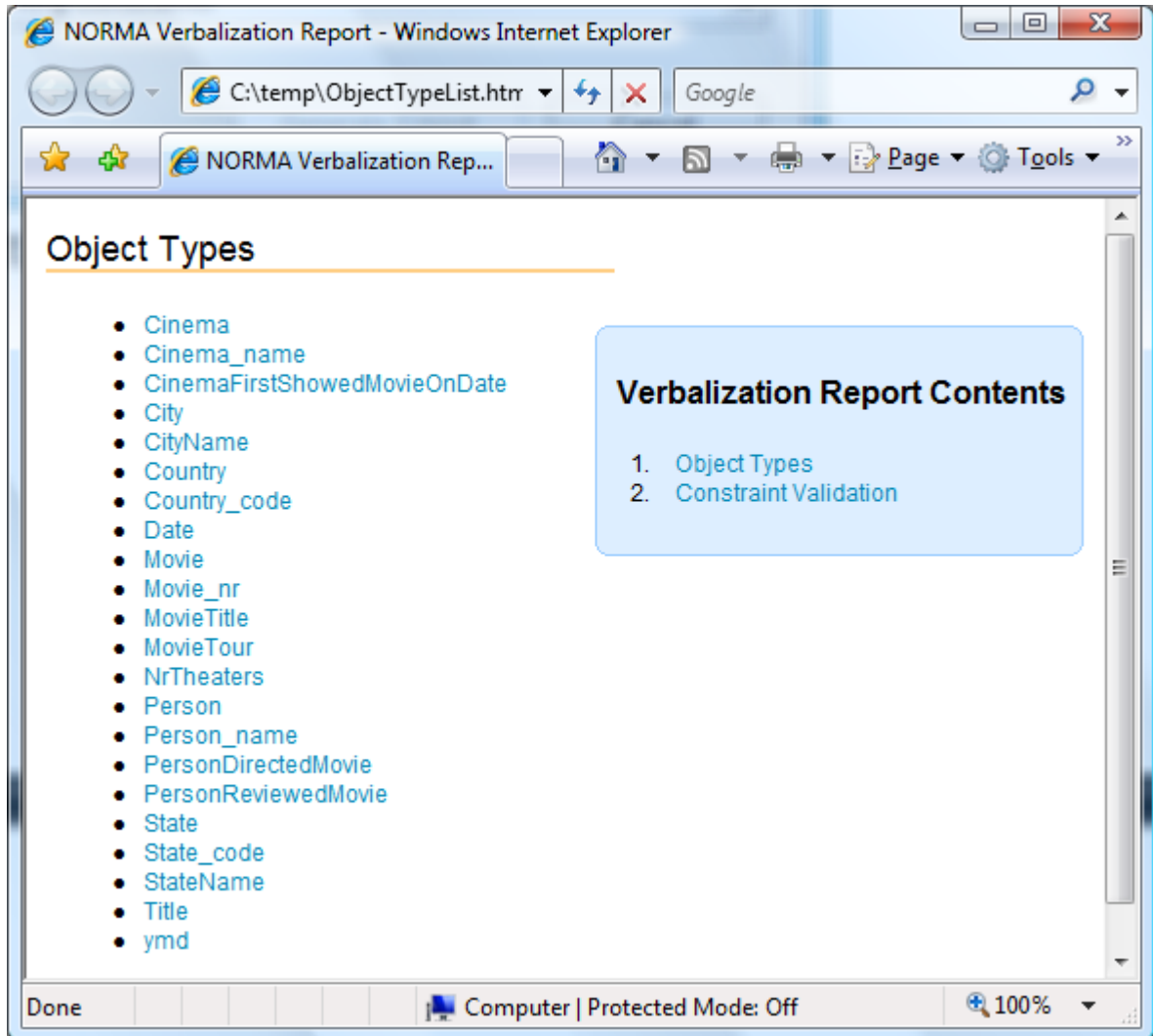
3. Select 'Report Generator' from the context window
4. The 'Verbalization Report Generator' is displayed.



5. Select the desired options for the generated report.
  - a. Select an output directory for the HTML files. An empty directory is preferred. Click the  to browse to the location.
6. Click Generate Report. The files are generated and placed in the selected folder. The Verbalization Report Generator dialog is closed, and focus is returned to the design surface.
7. Open the folder which was selected (e.g. C:\...\Temp)

- FactTypes
- ObjectTypes
- ObjectTypeList.html

8. Open 'ObjectTypeList.html' using a web browser.



9. All objects are listed from the model. The relationships can then be verified.
- a. Verbalization Report Contents displays the reports that are available.

10. The "Constraint Validation Report" displays the verbalizations for each constraint. These can be verified with the domain for validation. A signature line at the bottom of the report is useful for sign off when printed.

NORMA Verbalization Report - Windows Internet Explorer

C:\Report\ConstraintValidationReport.html

Google

Google

Go

Bookmarks

PageRank

13 blocked

Settings

Links

Home Pages

LMS Classes

OMA stuff

Stuff

Docs and Spreadsheets

FOX News Talk

Gmail - Inbox

NORMA Verbalization Report

Page

Tools

## "CinemaHasCinema\_name" Fact Type

### Summary

Cinema has Cinema\_name.

### Role Players

- Cinema
- Cinema\_name

### Constraints

[InternalUniquenessConstraint7](#)

Type: InternalUniqueness

Verbalization:

Each Cinema\_name is of at most one Cinema.

This association with Cinema\_name provides the preferred identification scheme for Cinema.

[InternalUniquenessConstraint8](#)

Type: InternalUniqueness

Verbalization:

Each Cinema has at most one Cinema\_name.

[SimpleMandatoryConstraint4](#)

Type: SimpleMandatory

Verbalization:

Each Cinema has some Cinema\_name.

## "CinemaHasNrTheaters" Fact Type

Summary:

Computer | Protected Mode: Off

100%