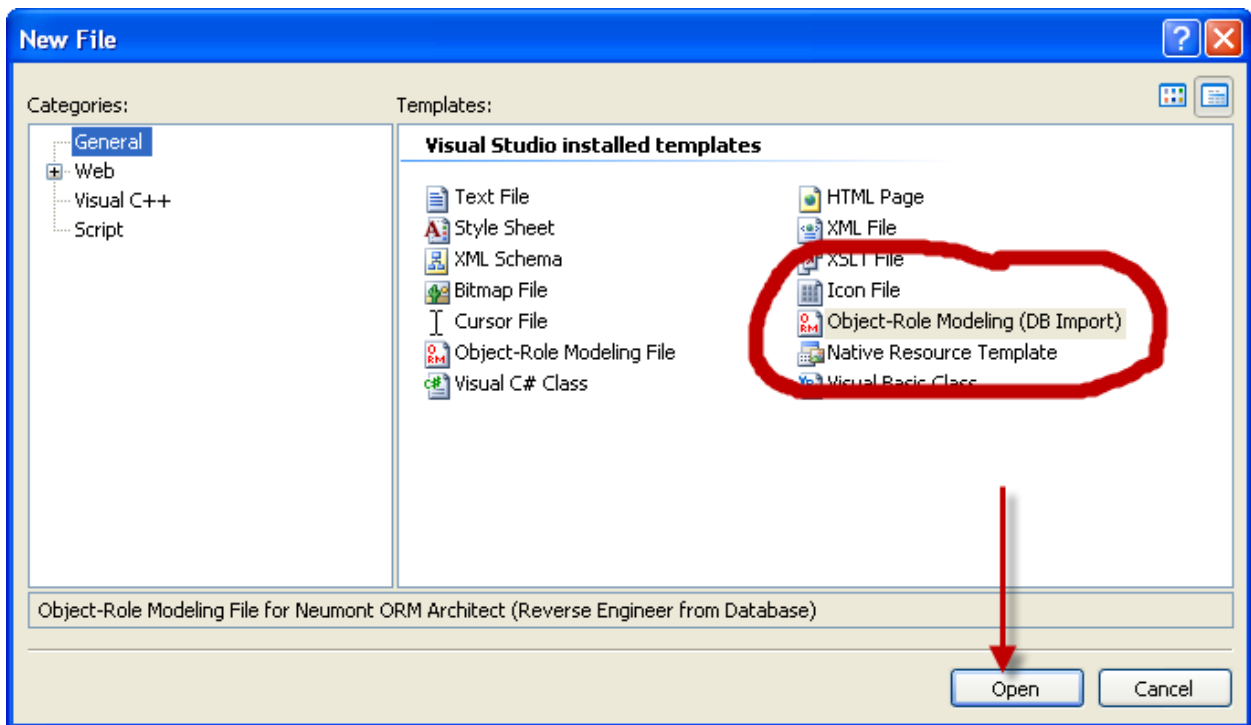
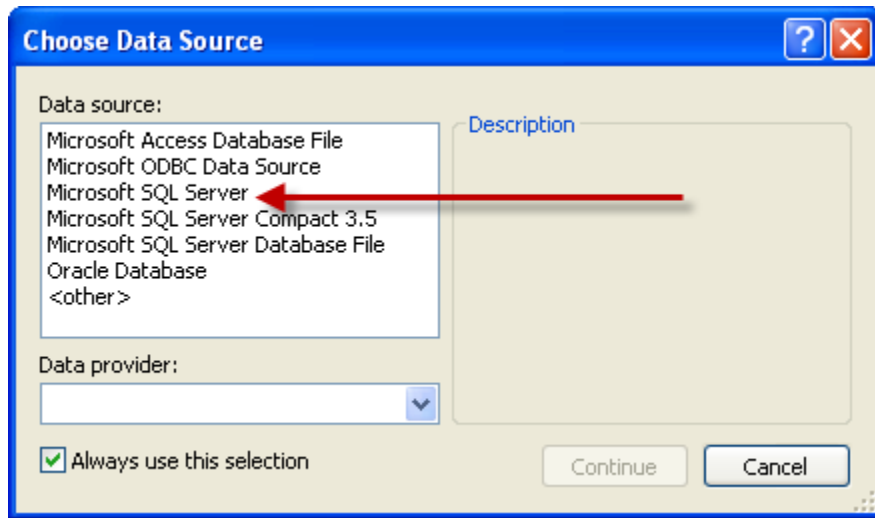


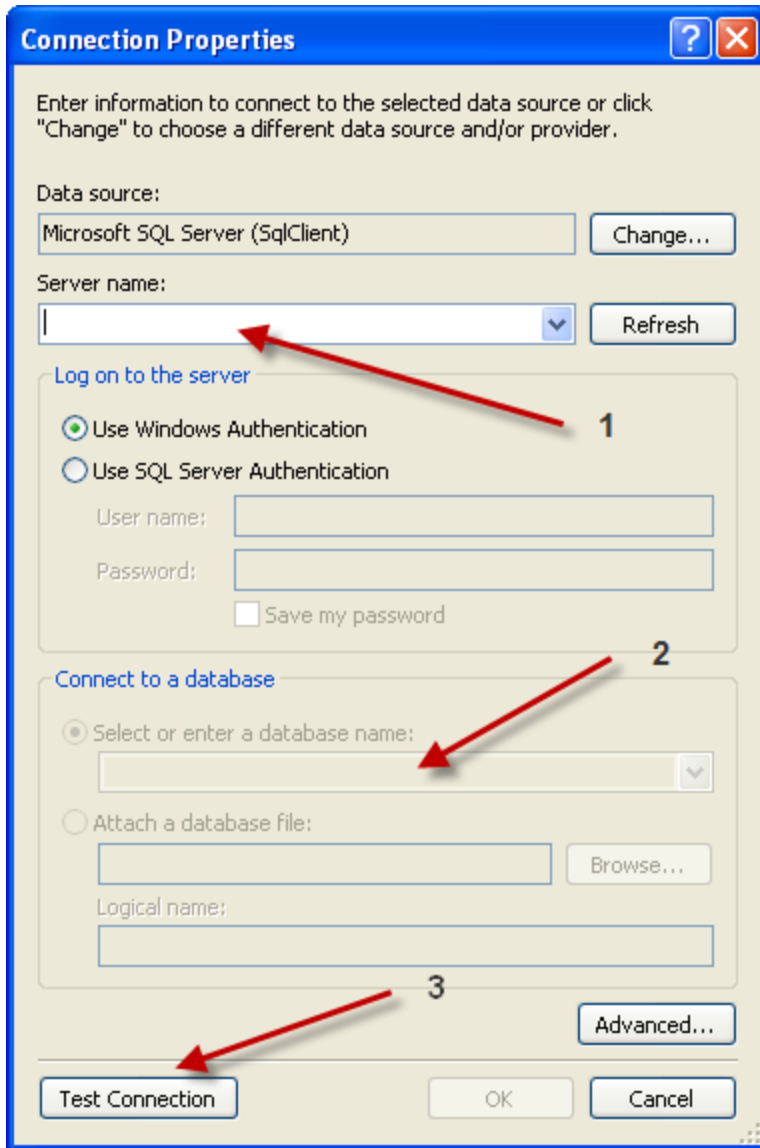
Step 1: Visual Studio main menu: Choose: File>File



Step 2: Select Object-Role Modeling (DB Import)



Step 3: Choose Microsoft SQL Server > Continue



Step 4:

- 4.1 Select the server name from the drop-down menu
- 4.2 Select a database name
- 4.3 Click on the "Test Connection" button

If all is OK, you will see the following Test Connection dialog box:



Step 5: Click OK on the "OK button